

## N-(p-Tosyl)-Gly-Pro-Lys 4-nitroanilide acetate salt

Cat. No.: N1516103 | Pack size: 5 mg, 5 × 5 mg | Storage: Protected from light; store at -20°C

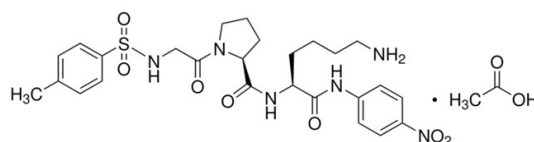


Fig. 1 Chemical structure of N-(p-Tosyl)-Gly-Pro-Lys 4-nitroanilide acetate salt.

### Overview

#### General description

A chromogenic substrate for plasmin.

#### Application

N-(p-Tosyl)-Gly-Pro-Lys 4-nitroanilide acetate salt has been used:

1. as a substrate for examining the amidolytic activity of aprE2, aprE5-41.
2. as a substrate for serine protease and fibrinogenolytic assays.
3. as a substrate for plasmin assay.

### Specifications

Property	Value
CAS No.	88793-79-7
Molecular Weight	634.700

Property	Value
Synonyms	N-Tosylglycyl-L-prolyl-L-lysine 4-nitroanilide acetate salt   N-p-Tosyl-Gly-Pro-Lys-pNA (acetate)   N-p-Tosyl-Gly-Pro- Lys-pNA Acetate Salt
Specifications & Purity	BioReagent, ≥98%
Biochemical and Physiological Mechanisms	N-(p-Tosyl)-Gly-Pro-Lys 4-nitroanilide acetate salt is a chromogenic substrate for plasmin assay, serine protease enzyme activity and fibrinogenolytic assays.
Stability And Storage	Store at -20 °C long term (12 months). Store in the dark.
Storage Conditions	Protected from light, Store at -20°C
Shipped In	Ice chest + Ice pads This product requires cold chain shipping. Ground and other economy services are not available.
Purity	≥98%

## Contact & Global Offices

Whether you have a technical question, need help with a quotation, or want to inquire about an order, our regional teams are ready to assist. Please contact the office for your region; for general inquiries, the North American office is the corporate primary.

<p>NORTH AMERICAN SALES, SUPPORT &amp; GENERAL INQUIRIES</p> <p><b>Aladdin Scientific Corporation</b> 14078 Meridian Parkway, Riverside, CA 92518, USA <b>Phone:</b> 1-833-552-7181 <b>Sales:</b> sales@aladdinsci.com <b>Customer Service:</b> custserv@aladdinsci.com</p>	<p>EU SALES, LOGISTICS &amp; LOCALIZED SUPPORT</p> <p><b>Aladdin Biochem Deutschland GmbH</b> Westring 2, 33142 Büren, Germany <b>Phone:</b> +02951 9383958 <b>Support:</b> support.eu@aladdinsci.com</p>
---	---

## Limitations & Disclaimer

- For Research Use Only (RUO). Not for use in human or animal diagnostics, therapeutics, or in vivo applications. Not for food, cosmetic, or household use.
- This product is not a CE-marked in vitro diagnostic device under IVDR (EU) 2017/746 and is not an FDA-cleared device under 21 CFR. Use is restricted to verified businesses, institutions, and qualified professionals for research and development purposes.

- Where any component is classified as hazardous under CLP (EC) 1272/2008 or OSHA HCS (29 CFR 1910.1200), the product Safety Data Sheet (SDS) takes precedence over this document for handling, storage, and disposal information.
- Performance depends on sample type, sample condition, handling, and operator technique. Users are responsible for validating the product for their specific application.